

# NINE MILE RANCH SECTION BREAKDOWN

T.40N., R.28E., W.M.  
SECTIONS 5, 6, AND 8  
OKANOGAN COUNTY, WASHINGTON

### LEGEND

- 20 1/2" SECTION CORNER MONUMENT
- 29 1/2" SECTION CORNER MONUMENT
- 21 1/4 SECTION CORNER MONUMENT
- 28 CLOSING CORNER MONUMENT
- CANADA 33 1/4" CLOSING CORNER MONUMENT
- 1A-CC CLOSING CORNER-INDIAN ALLOTMENT MONUMENT
- (2643.19) MEASURED DISTANCE AND BEARING
- (58847.15'W) MEASURED DISTANCE AND BEARING
- 2643.19 CALCULATED DISTANCE AND BEARING
- 58847.15'W ORIGINAL G.L.O PLATTED DISTANCE AND BEARING
- [2643.19] SET #5 REBAR AND CAP
- [58847.15'W] STAMPED GEODIM 22963.
- CALCULATED POINT
- ✕ FOUND ORIGINAL G.L.O. STONE
- ① REMONUMENTED WITH #5 REBAR AND ALUMINUM CAP
- ② STAMPED GEODIMENSIONS INC. PLS 22963
- ③ CALCULATED CORNER PROPORTIONATE METHOD
- ④ FOUND 3 1/4" BRASS CAP IN GALV STEEL PIPE
- ⑤ STAMPED U.S. DEPT OF THE INTERIOR
- ⑥ BUREAU OF LAND MANAGEMENT
- ⑦ FOUND 3 1/4" ALUMINUM CAP
- ⑧ STAMPED U.S. DEPT OF AGRICULTURE
- ⑨ 1966 CADASTRAL SURVEY
- ⑩ FOREST SERVICE
- ⑪ FOUND 3 BRASS CAP & PIPE
- ⑫ STAMPED U.S. DEPT OF THE INTERIOR
- ⑬ BUREAU OF LAND MANAGEMENT
- ⑭ FOUND 3 1/4" BRASS CAP ON ROCK SLAB
- ⑮ STAMPED U.S. GENERAL LAND OFFICE SURVEY
- ⑯ 1964
- ⑰ FOUND 3" BRASS CAP
- ⑱ STAMPED U.S. DEPT OF AGRICULTURE
- ⑲ W.M. 14472
- ⑳ 1967 CADASTRAL SURVEY
- ㉑ FOREST SERVICE
- ㉒ CORNER OBLITERATED
- ㉓ REESTABLISHED USING
- ㉔ END BEARING TREES
- ㉕ FOUND 3" BRASS CAP
- ㉖ STAMPED GEODIMENSIONS INC. PLS 22963
- ㉗ SET #5 REBAR AND ALUMINUM CAP
- ㉘ STAMPED GEODIMENSIONS INC. PLS 22963
- ㉙ USING PROPORTIONATE METHOD
- ㉚ FOUND ORIGINAL G.L.O. STONE
- ㉛ NOT REMONUMENTED

### NOTES.

- 1 ALL EXISTING MONUMENTS WERE VISITED BETWEEN APRIL 1994 AND JUNE 1995
- 2 FIELD TRAVERSES WERE PERFORMED WITH LETZ SET 2 AND SET 3 TOTAL STATIONS, HAVING A 2 AND 3' ANGULAR CAPABILITY
- 3 TRAVERSES WERE BALANCED USING THE LEAST SQUARES METHOD
- 4 INITIAL CONTROL AND SUBSEQUENT FIELD POINTS, WERE ESTABLISHED USING TRIMBLE GPS NAVIGATION SURVEY EQUIPMENT
- 5 FIELD DATA PROCESSING WAS PERFORMED USING TRIMBLE G.P.S. SOFTWARE & ACCORD CIVIL SOFTWARE
- 6 BASIS OF BEARING IS WASHINGTON STATE PLANE COORDINATE SYSTEM NAD 83 (91) 4601 WASHINGTON NORTH ZONE
- 7 MEASURED DISTANCES ARE IN STATE PLANE U.S. SURVEY FEET AND DECIMAL FEET AND CAN BE CONVERTED TO GROUND DISTANCE BY MULTIPLYING A COMBINED FACTOR OF 1.00007431

### SURVEYORS CERTIFICATE

This map correctly represents a survey made by me or under my direction, in conformance with the requirements of the Survey Recording Act of the request of the Tacopoa Land Company



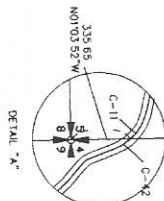
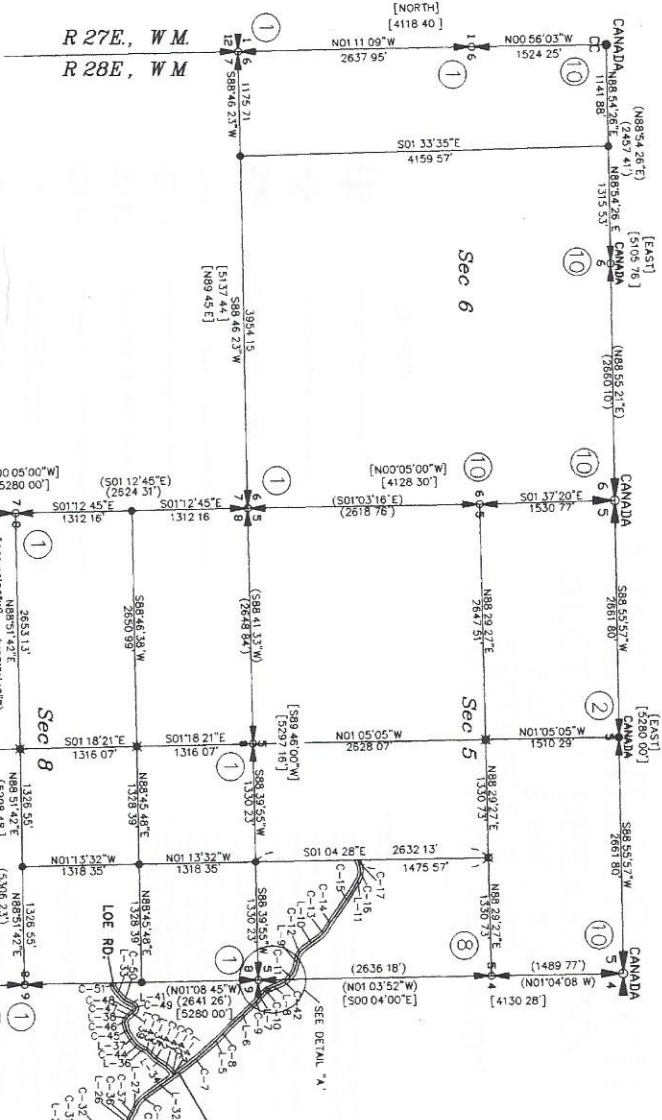
*Norman Nelson*  
Norman Nelson  
22963 Certificate No  
10-2-95 Date

### AUDITORS CERTIFICATE

Filed for record this 9 day of NOV 1995 at 1:50 pm  
in Book K of Surveys at Page 252 - 253

Auditors No 834872 Peggy Robbins  
Mia Gray  
County Auditor  
Deputy Auditor

# NINE MILE RANCH SECTION BREAKDOWN T.40N., R.28E., W.M. SECTIONS 5, 6, AND 8 OKANOGAN COUNTY, WASHINGTON



LINE TABLE

LINE	DIRECTION	DISTANCE
L-1	S01°07'00\"/>	

CURVE TABLE

CURVE	RADIUS	LENGTH	TANGENT	DELTA
C-1	138.92'	131.72'	71.28'	54°18'02\"/>

K-253